



UBE2D2 Polyclonal Antibody

Catalog No	YP-Ab-02812
Isotype	IgG
Reactivity	Human;Mouse;Rat
Applications	WB;ELISA
Gene Name	UBE2D2
Protein Name	Ubiquitin-conjugating enzyme E2 D2
Immunogen	The antiserum was produced against synthesized peptide derived from human UBE2D2. AA range:98-147
Specificity	UBE2D2 Polyclonal Antibody detects endogenous levels of UBE2D2 protein.
Formulation	Liquid in PBS containing 50% glycerol, 0.5% BSA and 0.02% sodium azide.
Source	Polyclonal, Rabbit,IgG
Purification	The antibody was affinity-purified from rabbit antiserum by affinity-chromatography using epitope-specific immunogen.
Dilution	Western Blot: 1/500 - 1/2000. ELISA: 1/10000. Not yet tested in other applications.
Concentration	1 mg/ml
Purity	≥90%
Storage Stability	-20°C/1 year
Synonyms	UBE2D2; UBC4; UBC5B; UBCH4; UBCH5B; Ubiquitin-conjugating enzyme E2 D2; Ubiquitin carrier protein D2; Ubiquitin-conjugating enzyme E2(17)KB 2; Ubiquitin-conjugating enzyme E2-17 kDa 2; Ubiquitin-protein ligase D2
Observed Band	17kD
Cell Pathway	ubiquitin ligase complex,nucleoplasm,cytosol,protein complex,extracellular exosome,
Tissue Specificity	Brain,Cajal-Retzius cell,Testis,
Function	catalytic activity:ATP + ubiquitin + protein lysine = AMP + diphosphate + protein N-ubiquityllysine.,function:Catalyzes the covalent attachment of ubiquitin to other proteins. Mediates the selective degradation of short-lived and abnormal proteins. Functions in the E6/E6-AP-induced ubiquitination of p53/TP53.,pathway:Protein modification; protein ubiquitination.,similarity:Belongs to the ubiquitin-conjugating enzyme family.,subunit:Interacts with SCF (SKP1-CUL1-F-box protein) E3 ubiquitin ligase complex and with E3 ubiquitin-protein ligase PJA2.,
Background	Regulated degradation of misfolded, damaged or short-lived proteins in eukaryotes occurs via the ubiquitin (Ub)-proteasome system (UPS). An integral part of the UPS system is the ubiquitination of target proteins and covalent linkage of Ub-containing proteins to form polymeric chains, marking them as targets for 26S proteasome-mediated degradation. Ubiquitination of proteins is mediated by



a cascade of enzymes which includes E1 (ubiquitin activating), E2 (ubiquitin conjugating), and E3 (ubiquitin ligases) enzymes. This gene encodes a member of the E2 enzyme family. Substrates of this enzyme include the tumor suppressor protein p53 and peroxisomal biogenesis factor 5 (PEX5). Alternative splicing results in multiple transcript variants of this gene. [provided by RefSeq, May 2013],

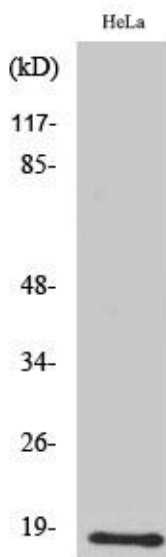
matters needing attention

Avoid repeated freezing and thawing!

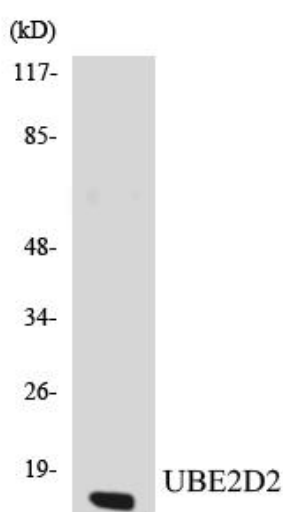
Usage suggestions

This product can be used in immunological reaction related experiments. For more information, please consult technical personnel.

Products Images



Western Blot analysis of various cells using UBE2D2 Polyclonal Antibody diluted at 1:2000. Secondary antibody(catalog#:RS0002) was diluted at 1:20000



Western blot analysis of the lysates from K562 cells using UBE2D2 antibody.